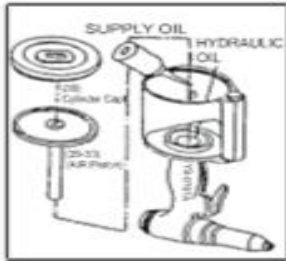
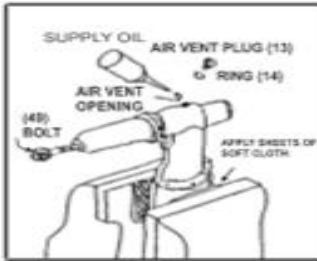
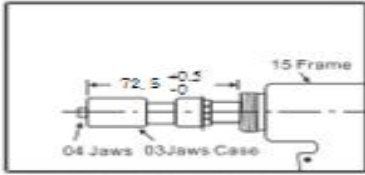


### ENERGY SAVING TYPE (FOR ALUMINUM RIVETS UP TO 6.4mm) ADDING OIL METHOD (一) (二)

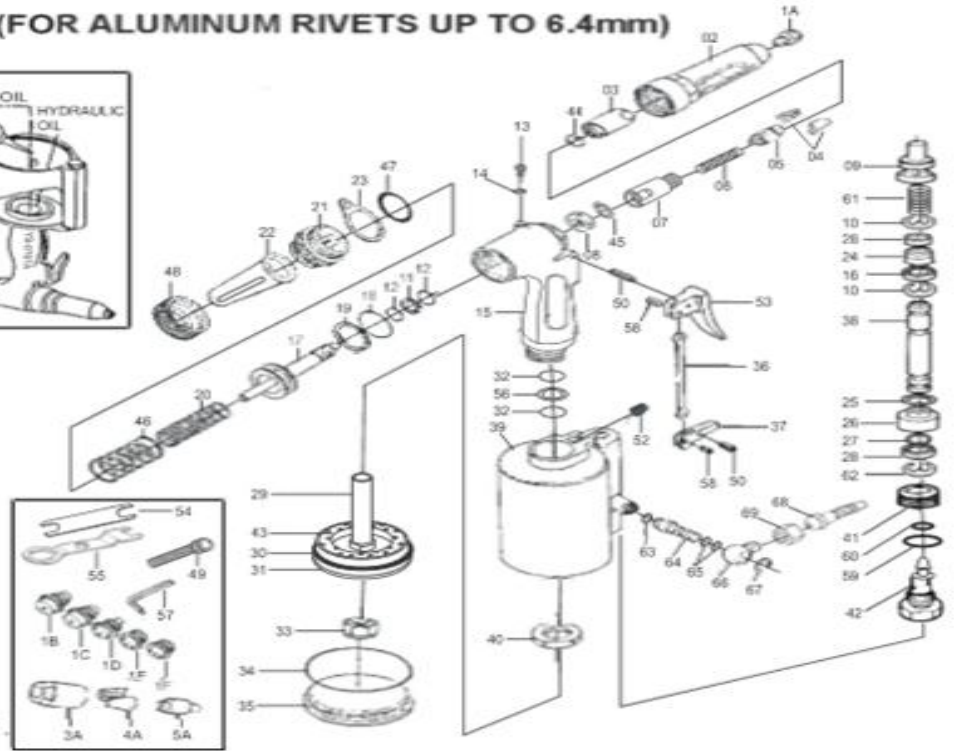


### ADJUSTING LENGTH



### SPECIFICATIONS

Traction Power: 1229 kg.f (2713 LBS.F)  
Stroke Length: 14mm (0.551")  
Air Hose Size: 3/8" I.D.  
Air Inlet: 1/4" PT(NPT)  
Net Weight: 1.64 kgs (3.61 LBS)  
Air Consumption: 1.48 Liter/Stroke  
Air Pressure: 78 -85 PSI (5.5~6.0 kg/cm<sup>2</sup>)  
Capacity: 1/4", 7/32", 3/16", 5/32", 1/8", 3/32"



| DESCRIPTION                 | PARTS NO. | DESCRIPTION           | PARTS NO. | DESCRIPTION                 | PARTS NO. |
|-----------------------------|-----------|-----------------------|-----------|-----------------------------|-----------|
| Nose Piece 6.4m/m(1/14")    | 11610-1A  | Oil Piston            | 11610-17  | Rubber Cushion              | 11610-43  |
| Nose Piece 6.0m/m           | 11610-1B  | O Ring                | 11610-18  | Jaw Case O Ring             | 11610-44  |
| Nose Piece 4.8m/m(3/6")     | 11610-1C  | Back Up Ring          | 11610-19  | Washer Ring                 | 11610-45  |
| Nose Piece 4.0m/m(5/32")    | 11610-1D  | Return Spring (Small) | 11610-20  | Return Spring (Big)         | 11610-46  |
| Nose Piece 3.2m/m(1/8")     | 11610-1E  | Frame Cap             | 11610-21  | Frame Cap O Ring            | 11610-47  |
| Nose Piece 2.4m/m(3/32")    | 11610-1F  | Safety Cap            | 11610-22  | Safety Cap Nut              | 11610-48  |
| Nose Housing 93L            | 11610-2   | Hanger Clip           | 11610-23  | Bolt Plug                   | 11610-49  |
| Long Nose Housing 202L      | 11610-2L  | Air Valve Seal        | 11610-24  | Pin 3x20                    | 11610-50  |
| Jaw Case (3/16"~1/4")       | 11610-3   | O Ring                | 11610-25  | Pin 3x18                    | 11610-50A |
| Jaw Case (3/32"~5/32")      | 11610-3A  | Valve Seat            | 11610-26  | Lock Screw                  | 11610-52  |
| Jaws (6x12)(3/16"~1/4") (2) | 11610-4   | O Ring                | 11610-27  | Trigger (Long)              | 11610-53  |
| Jaws (5x10)(3/32"~5/32")    | 11610-4A  | Ring Seal Washer (2)  | 11610-28  | Trigger (Short)             | 11610-53A |
| Jaw Pusher (3/16"~1/4")     | 11610-5   | Air Piston Rod        | 11610-29  | Spanner Gauge               | 11610-54  |
| Jaw Pusher (3/32"~5/32")    | 11610-5A  | O Ring                | 11610-30  | Spanner                     | 11610-55  |
| Jaw Case spring             | 11610-6   | Air Piston            | 11610-31  | Back Up Ring                | 11610-56  |
| Jaw Case Back Part          | 11610-7   | O Ring (2)            | 11610-32  | Hex Wrench                  | 11610-57  |
| Long Jaw Case Back Part     | 11610-7L  | Lock Nut              | 11610-33  | Trigger Pin (2)             | 11610-58  |
| Jaw Case Lock Nut           | 11610-8   | O Ring                | 11610-34  | O Ring                      | 11610-59  |
| Valve Pusher                | 11610-9   | Cylinder Cap          | 11610-35  | Seal                        | 11610-60  |
| E Ring (2)                  | 11610-10  | Trigger Rod           | 11610-36  | Pusher Spring               | 11610-61  |
| Back Up Ring                | 11610-11  | Trigger Lever         | 11610-37  | E Ring                      | 11610-62  |
| O Ring (2)                  | 11610-12  | Valve Tube            | 11610-38  | Optional Accessories        | 11610-63~ |
| Air Blow Plug               | 11610-13  | Air Cylinder          | 11610-39  | YS-0064, YS-0064B.          |           |
| Packing                     | 11610-14  | Frame Lock Nut        | 11610-40  | AIR HOSE JOINT 5/16" - B    | 11610-68  |
| Frame                       | 11610-15  | Nipple Screw          | 11610-41  | AIR HOSE JOINT NUT 1/4" - B | 11610-69  |
| Collar for Valve Tube       | 11610-16  | End Plug              | 11610-42  | OUTER THREAD JOINT PM20 - A | 11610-70  |