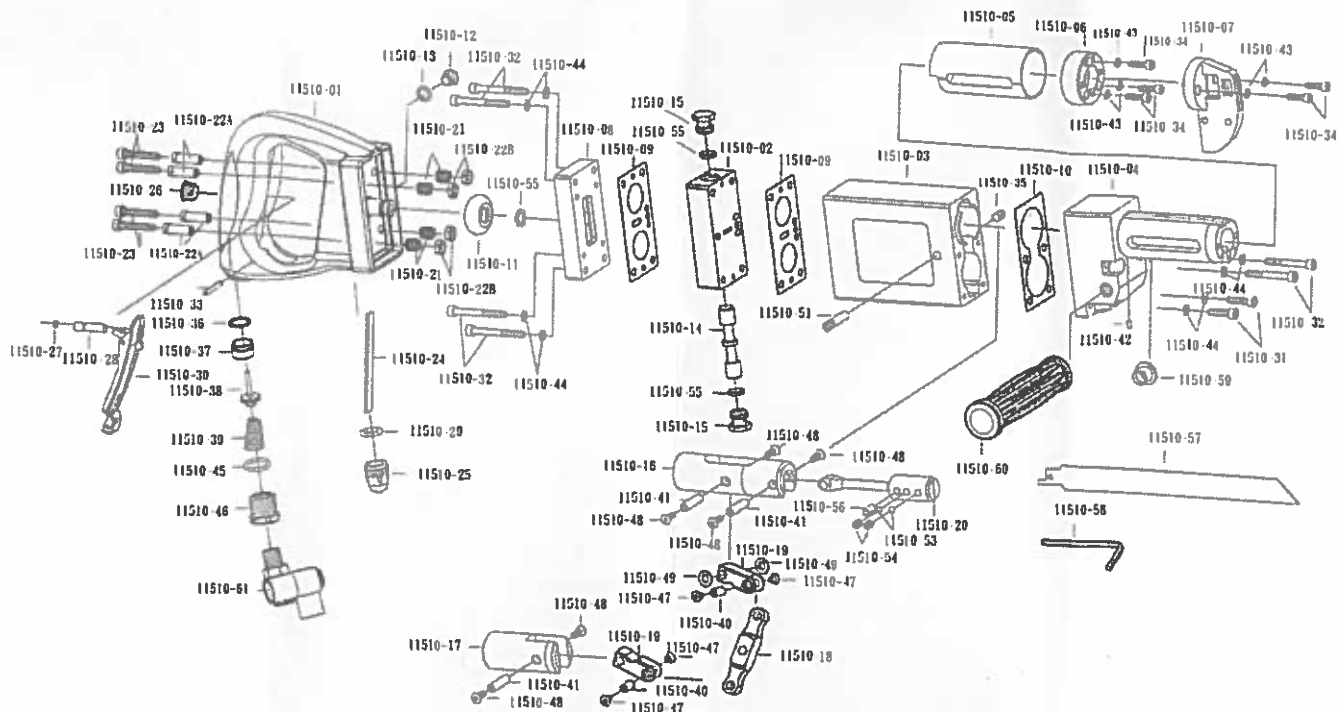


# MPT-11510 Industrial Air Saw



DESCRIPTION	PARTS NO.
Handle	11510-01
Valve Unit Body	11510-02
Body	11510-03
Front End Housing (3/4" Slot)	11510-04
Silencer Guard	11510-05
End Cap (3/4" Slot)	11510-06
Nosepiece (3/4" Slot)	11510-07
Rear Block	11510-08
Gasket - Valve Unit Body(2)	11510-09
Gasket - Body to Front End Housing	11510-10
Bumper	11510-11
Set Screw	11510-12
O-Ring	11510-13
Valve Rod	11510-14
Valve Rod Cap (2)	11510-15
Top Piston	11510-16
Bottom Piston	11510-17
Middle Link Rod	11510-18
Outer Link Rod (2)	11510-19
Connecting Rod	11510-20
Spring (4)	11510-21
Bolt Sleeve (4)	11510-22A
Nut (4)	11510-22B
Screw (4)	11510-23
Oil Pad	11510-24
Visible Oil Container	11510-25
Plug Screw	11510-26
O-Ring	11510-27
Throttle Valve Stem	11510-28
O-Ring	11510-29
Safety Lever Ass'y	11510-30

DESCRIPTION	PARTS NO.
Socket Head Cap Screw (2)	11510-31
Socket Head Cap Screw (6)	11510-32
Spring Pin	11510-33
Socket Head Cap Screw (5)	11510-34
Set Screw	11510-35
O-Ring	11510-36
Valve Seat	11510-37
Actuating Valve Ass'y	11510-38
Spring	11510-39
Hollow Shaft (S) (2)	11510-40
Hollow Shaft (L) (3)	11510-41
Spring Pin	11510-42
Spring Washer (5)	11510-43
Spring Washer (8)	11510-44
O-Ring	11510-45
Air Inlet Bushing	11510-46
Screw (4)	11510-47
Screw (6)	11510-48
Washer (2)	11510-49
Roll Pin	11510-51
Steel Ball (2)	11510-53
Set Screw (2)	11510-54
O-Ring (3)	11510-55
Spring Pin	11510-56
(3/4") 300-8/12-SL Saw Blade	11510-57
(3/4") 300-14-ST Saw Blade	11510-57A
3 MM Hex Wrench	11510-58
Plug	11510-59
Hand Grip	11510-60
1/4" PT Universal Swivel Air Inlet Joint	11510-61