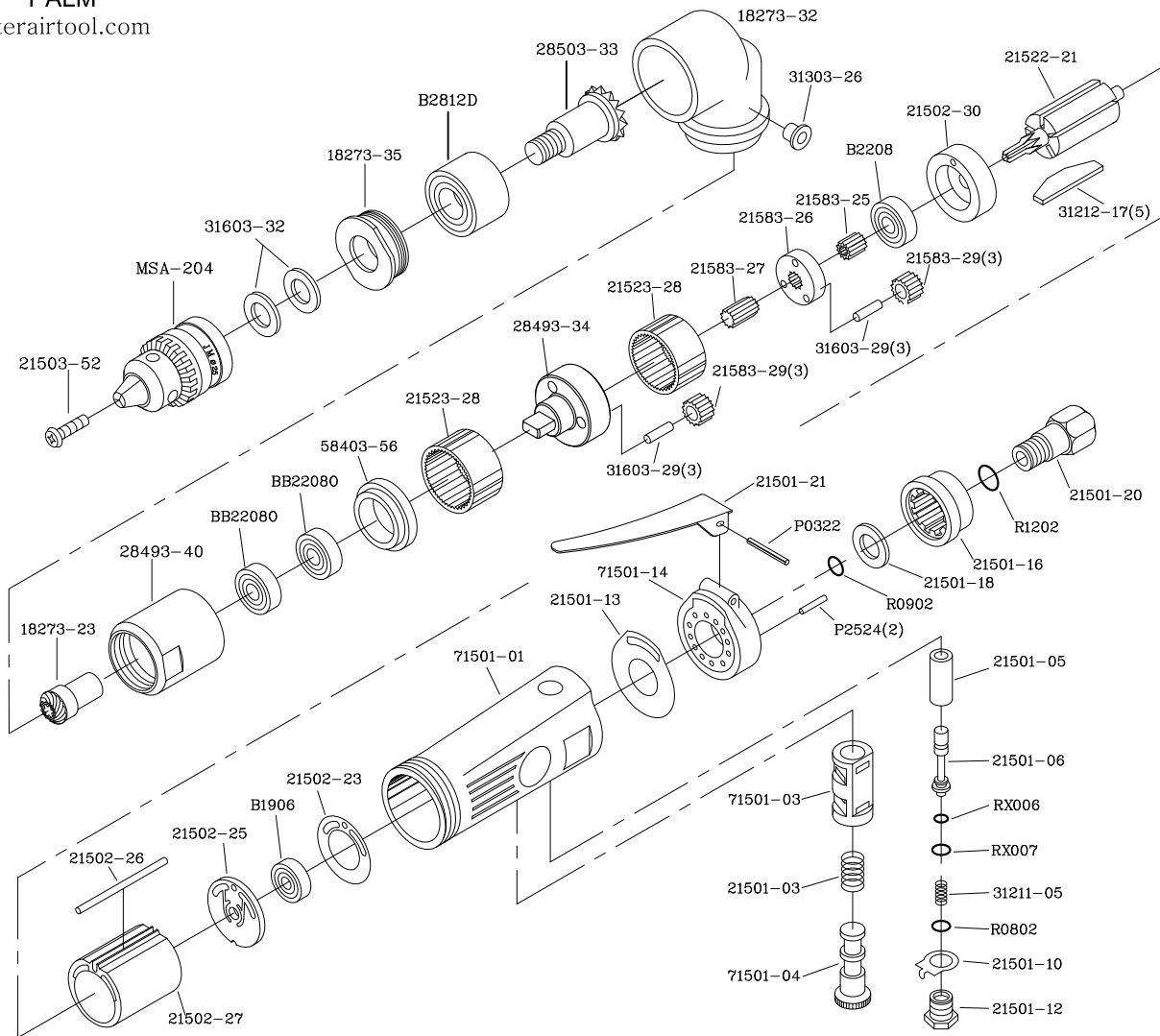


MPT-28490 1/2" Reversible Angle Air Drill



DESCRIPTION	PARTS NO.	DESCRIPTION	PARTS NO.
MOTOR HOUSING	71501-01	CYLINDER	21502-27
REVERSE BUSHING	71501-03	ROTOR	21522-21
REVERSE SPRING	21501-03	ROTOR BLADE (5)	31212-17
REVERSE VALVE	71501-04	FRONT END PLATE	21502-30
VALVE BUSHING	21501-05	BALL BEARING	B2208
THROTTLE VALVE	21501-06	PLANET CONNECT GEAR	21583-25
O-RING	RX006	BACK PLANET GEAR SEAT	21583-26
O-RING	RX007	TRANSMISSION GEAR	21583-27
VALVE SPRING	31211-05	PLANET GEAR (6)	21583-29
O-RING	R0802	PLANET GEAR SPINDLE (6)	31603-29
REVERSE RETAINER	21501-10	PLANET GEAR SEAT	28493-34
VALVE SCREW	21501-12	INTERNAL GEAR (2)	21523-28
HOUSING GASKET	21501-13	HOUSING WASHER	58403-56
HOUSING CAP	71501-14	BALL BEARING (2)	BB22080
SPRING PIN(2)	P2524	PINION	18273-23
O-RING	R0902	HOUSING LOCK RING	28493-40
HOUSING CAP STOP WASHER	21501-18	ANGLE HOUSING	18273-32
DEFLECTOR	21501-16	OIL PLUG	31303-26
O-RING	R1202	SPINDLE GEAR	28503-33
INLET BUSHING	21501-20	GEAR LOCK RING	18273-35
THROTTLE LEVER	21501-21	BALL BEARING	B2812D
SPRING PIN(2)	P0322	SPINDLE WSHR (2)	31603-32
MOTOR GASKET	21502-23	1/2" DRILL CHUCK	MSA-204
BALL BEARING	B1906	CHUCK SCREW	21503-52
REAR END PLATE	21502-25	SK4 SPANNER WRENCH	WO318
MOTOR PIN	21502-26		