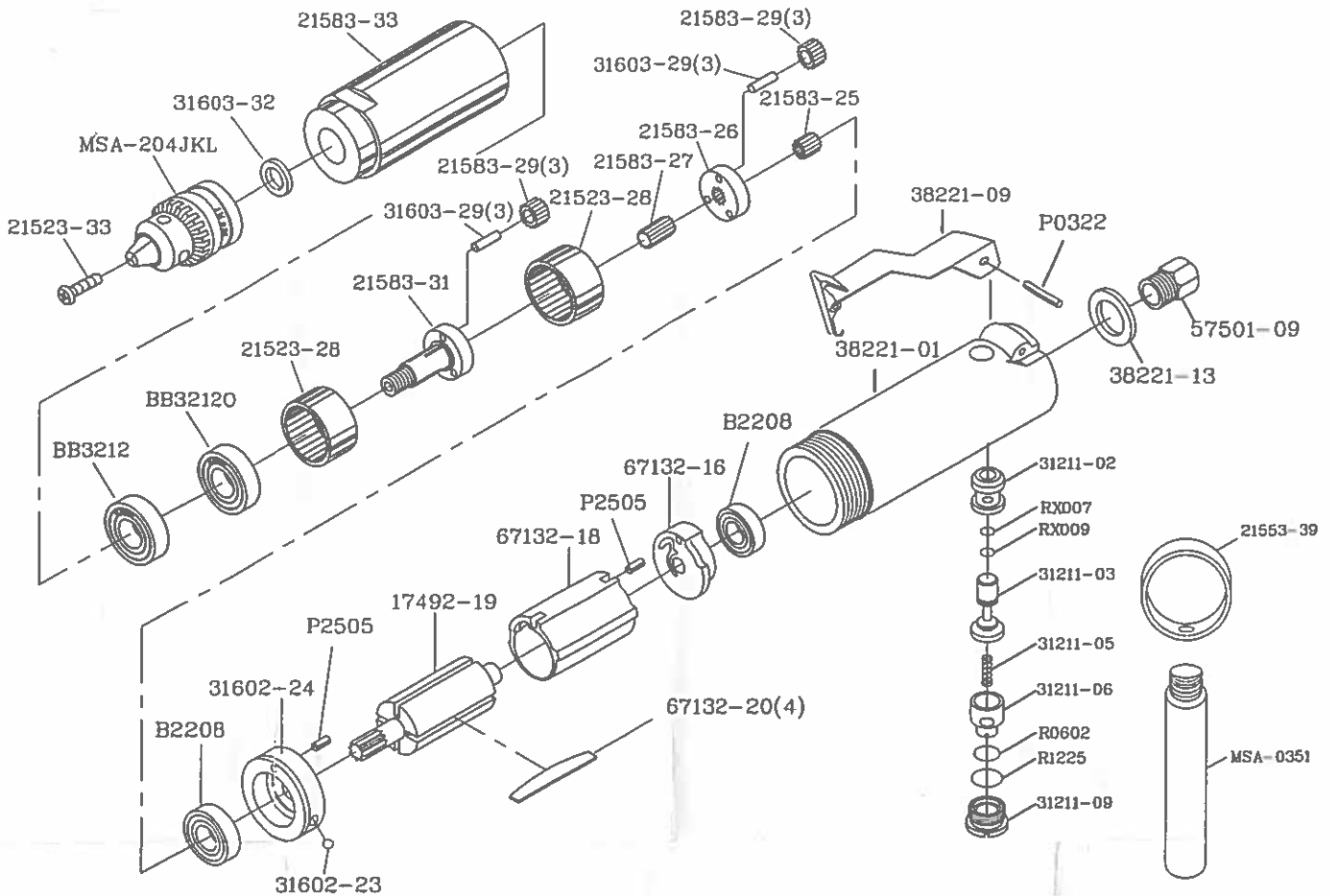


# MPT-28650 1/2" Straight Air Drill (800 r.p.m.)



| DESCRIPTION      | PARTS NO. | DESCRIPTION               | PARTS NO.  |
|------------------|-----------|---------------------------|------------|
| MOTOR HOUSING    | 38221-01  | ROTOR BLADE (4)           | 67132-20   |
| VALVE BUSHING    | 31211-02  | FRONT END PLATE           | 31602-24   |
| O RING           | RX007     | ROLL PIN                  | 31602-23   |
| O RING           | RX009     | PLANET CONNECT GEAR       | 21583-25   |
| THROTTLE VALVE   | 31211-03  | BACK OF PLANET GEAR SEAT  | 21583-26   |
| SPRING           | 31211-05  | TRANSMISSION GEAR         | 21583-27   |
| AIR REGULATOR    | 31211-06  | PLANET GEAR SPINDLE (6)   | 31603-29   |
| O RING           | R0602     | PLANET GEAR (6)           | 21583-29   |
| O RING           | R1225     | INTERNAL GEAR (2)         | 21523-28   |
| VALVE SCREW      | 31211-09  | FRONT OF PLANET GEAR SEAT | 21583-31   |
| THROTTLE LEVER   | 38221-09  | BEARING                   | BB32120    |
| LEVER PIN        | P0322     | BEARING                   | BB3212     |
| EXHAUSTER LEVER  | 38221-13  | CLAMP NUT                 | 21583-33   |
| AIR INLET        | 57501-09  | WASHER                    | 31603-32   |
| BALL BEARING (2) | B2208     | CHUCK                     | MSA-204JKL |
| REAR END PLATE   | 67132-16  | CHUCK                     | WO-319     |
| PIN (2)          | P2505     | CHUCK SCREW               | 21523-33   |
| CYLINDER         | 67132-18  | CLAMP                     | 21553-39   |
| ROTOR            | 17492-19  | CLAMP SHAFT               | MSA-0351   |